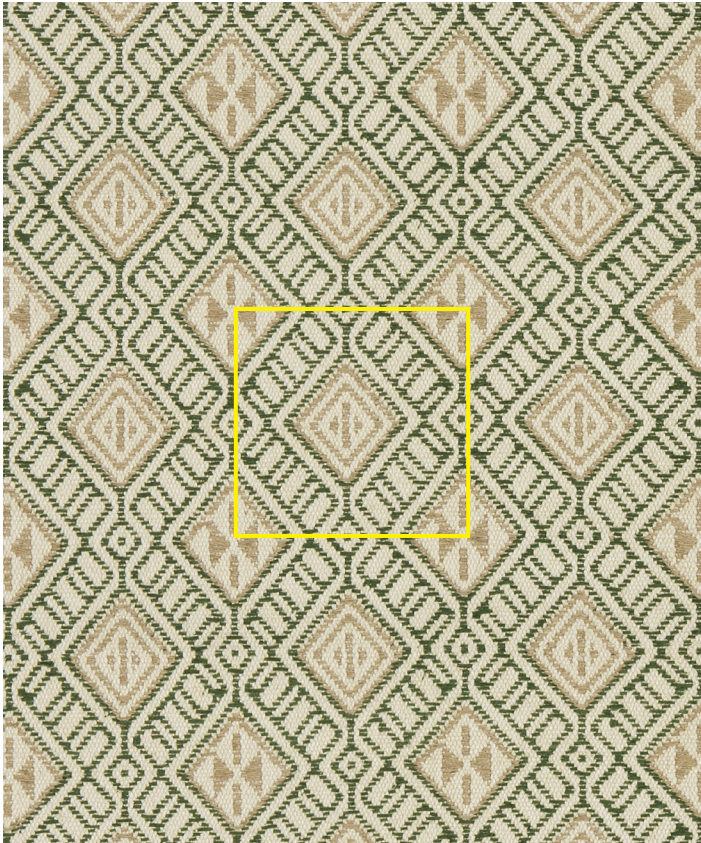


# namaysamay

## Pangkeb Sansam Kale | PS-01

The design repeats two motifs from a more variously patterned Bhutanese textile. Pangkeb refers to a multi-purpose traditional Bhutanese textile, used for (amongst other things) napkins, door hangings and altar decorations.



**Design** Pangkeb Sansam

**Colour** Kale

**Code** PS-01

**Composition** 100% Silk

**Width** 121cm / 47.5in

**Repeat** 11cm (h) 7cm (v)  
4.5in (h) 3in (v)

**Weight** 372g/sqm

**Notes** .....  
.....  
.....  
.....



Pangkeb Sansam Kale | PS-01

[www.namaysamay.com](http://www.namaysamay.com)

